

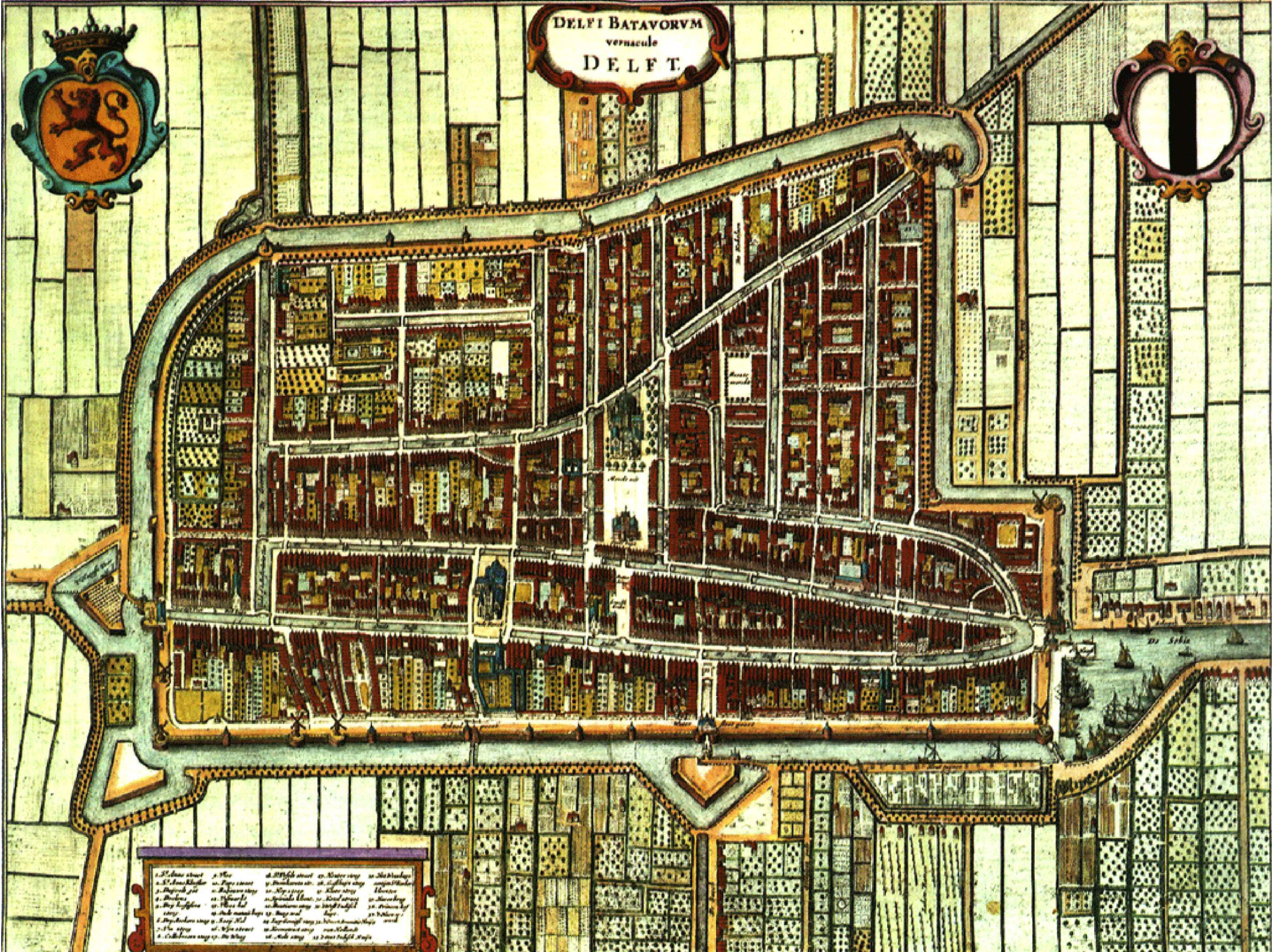








DELFI BATAVORVM  
vernacule  
DELFT.

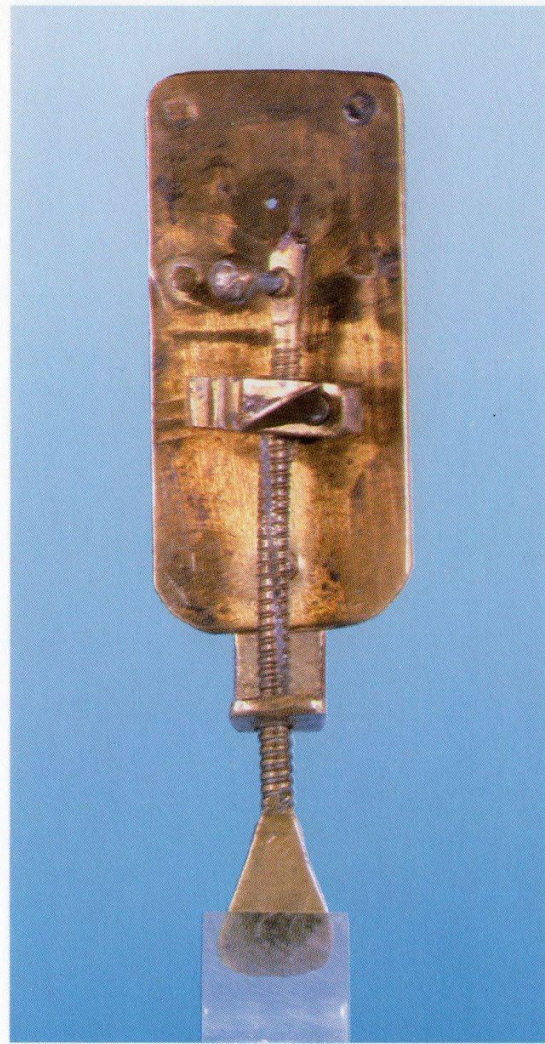


A list of street names in Latin, arranged in a grid. The text is small and difficult to read, but it appears to be a key or index for the map's streets.

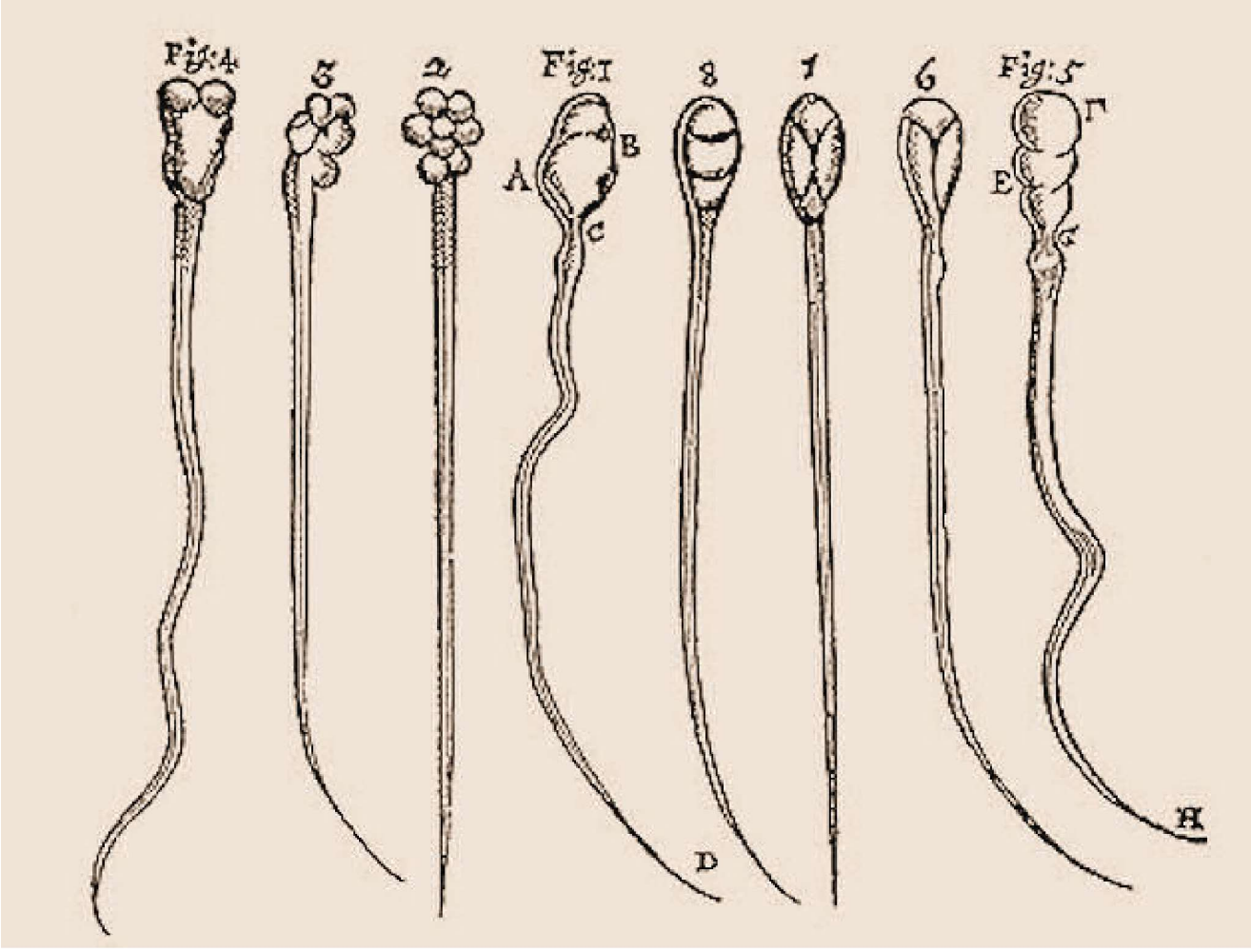




アントニ・レーウエンフック (1632-1723)

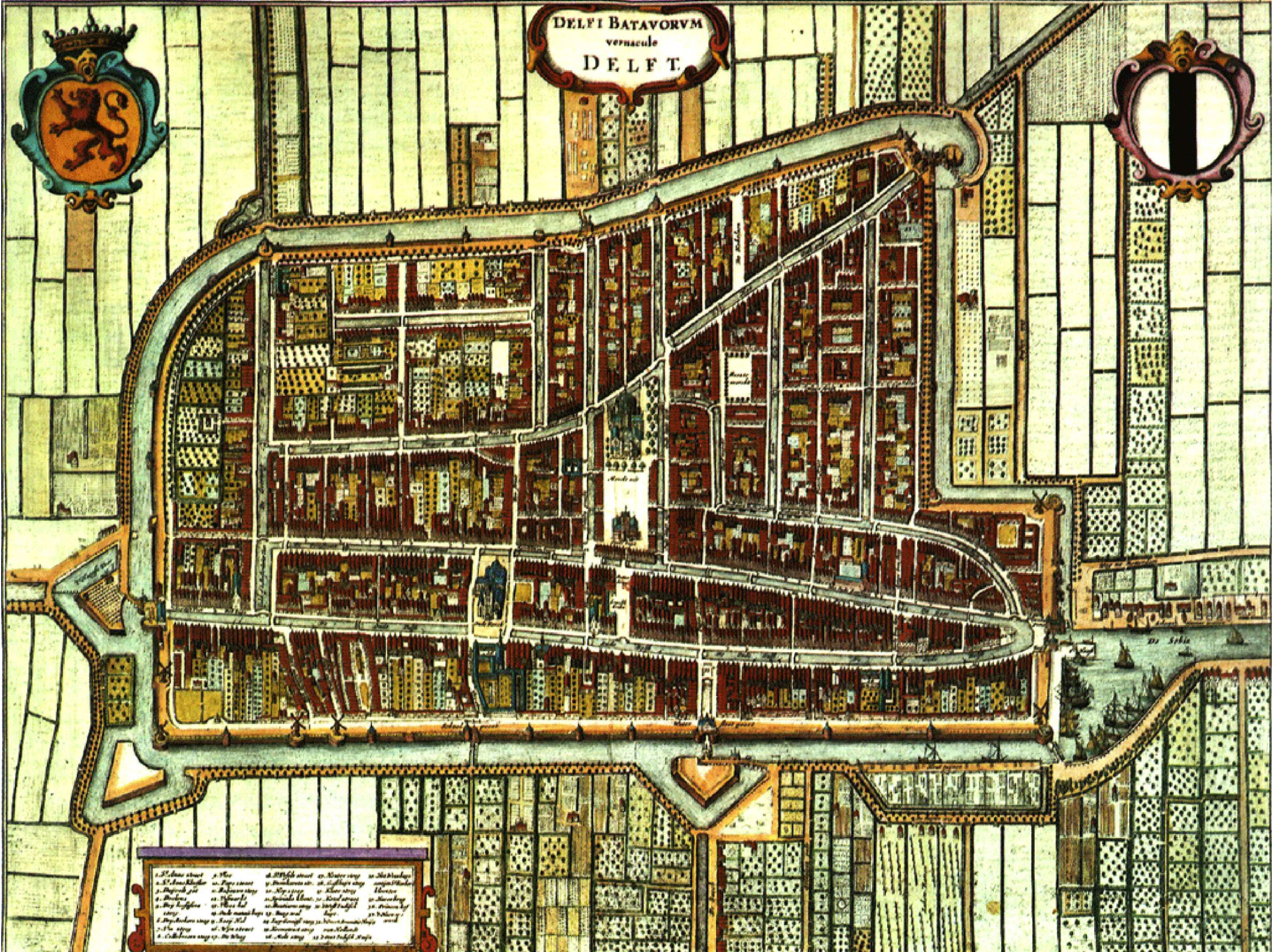








DELFI BATAVORVM  
vernacule  
DELFT.



A list of street names in Latin, organized in columns. The text is small and difficult to read, but it appears to be a key or index for the map's streets.

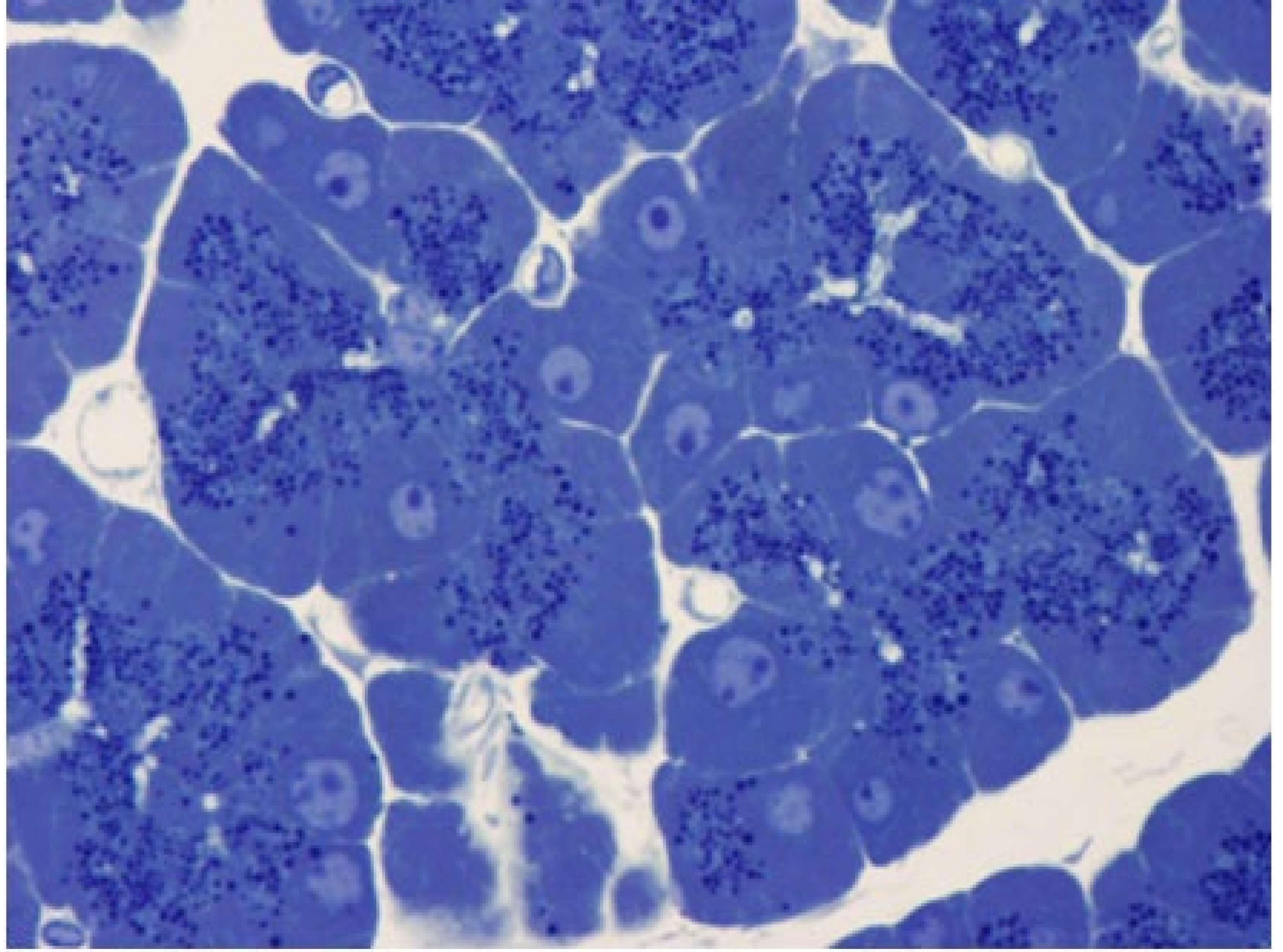




フェルメール (Vermeer)









# 機械論 メカニズム

「要素」還元主義

# GP2とは？









GP2遺伝子ノックアウトマウス

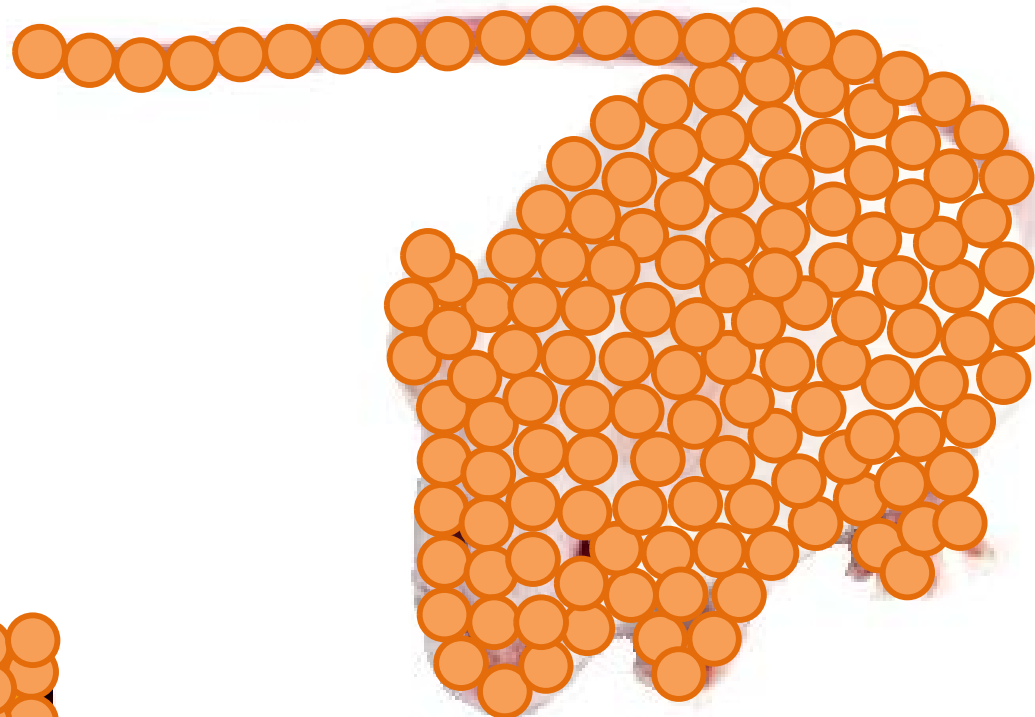
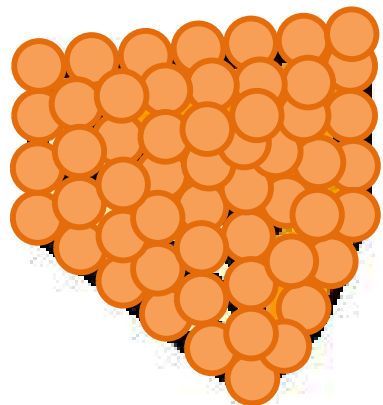


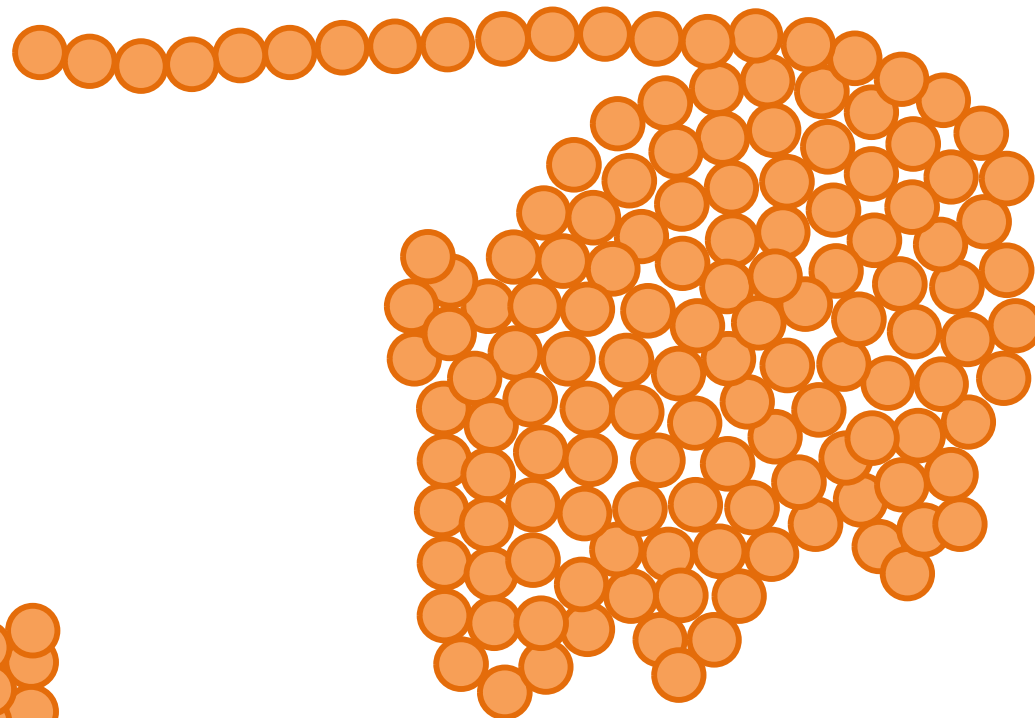
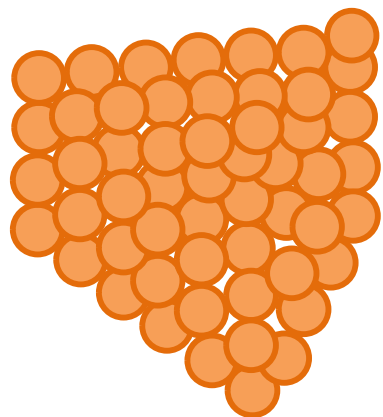
生命は機械ではない、生命は流れだ



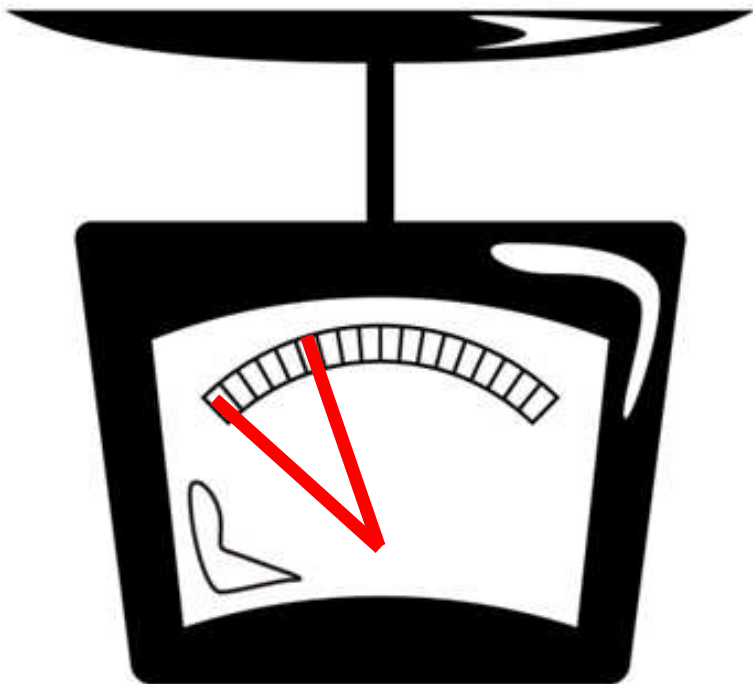
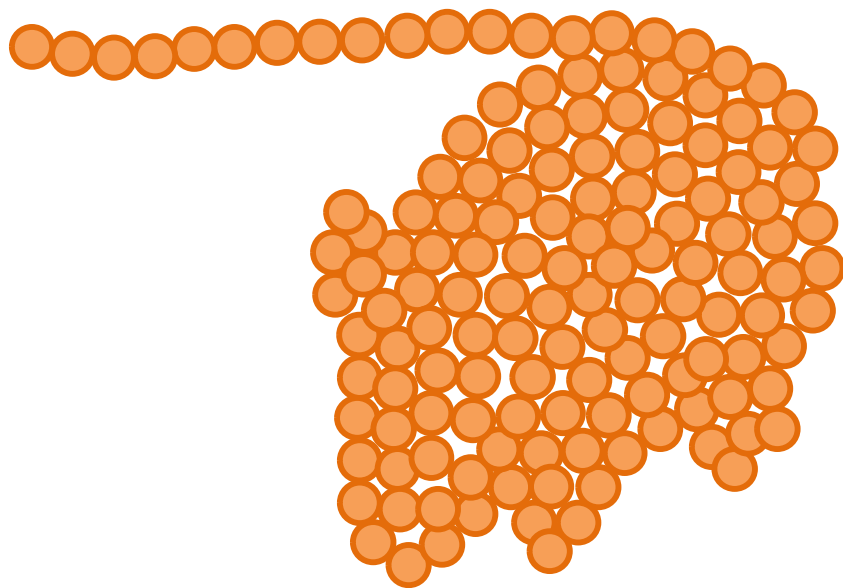
**ルドルフ・シェーンハイマー (1898-1941)**



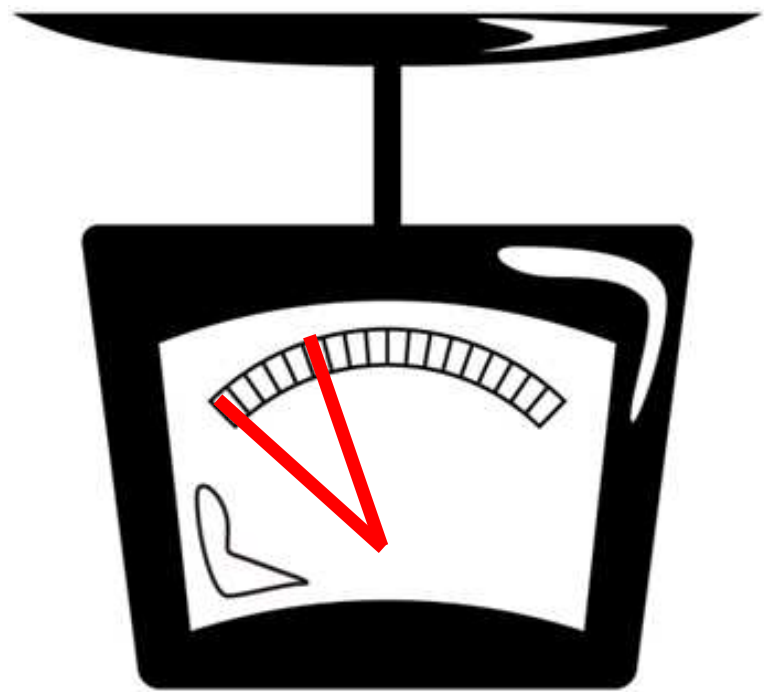
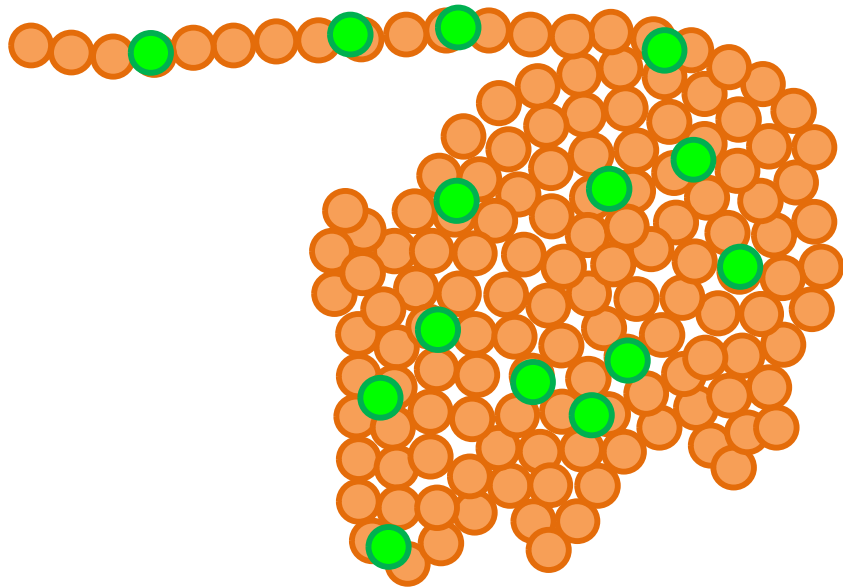


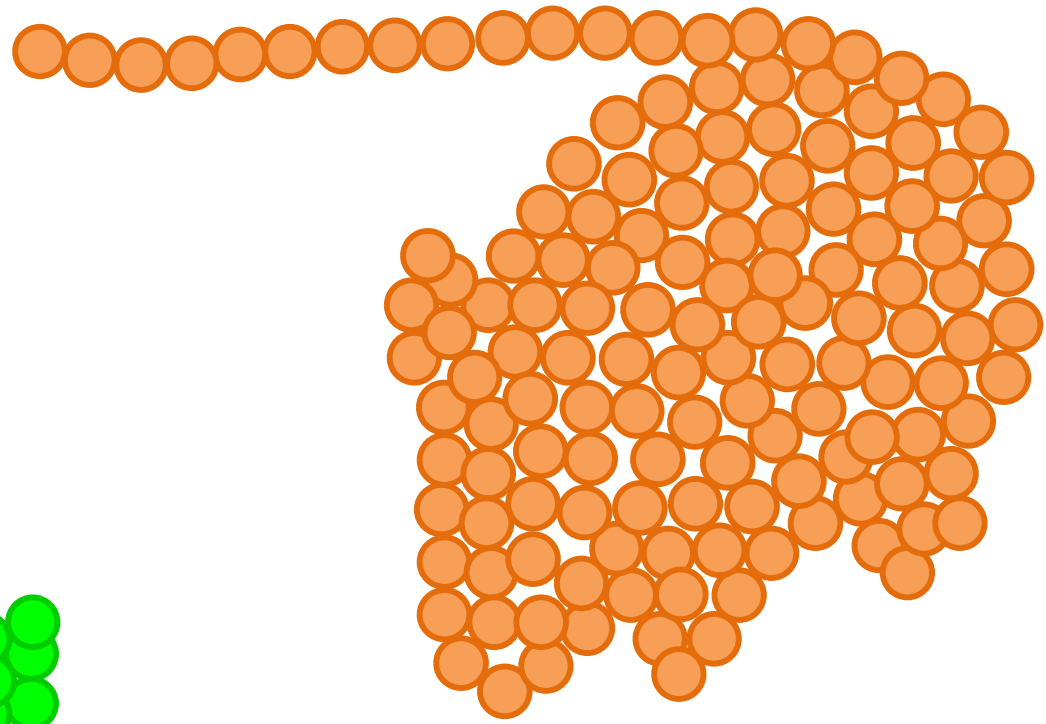
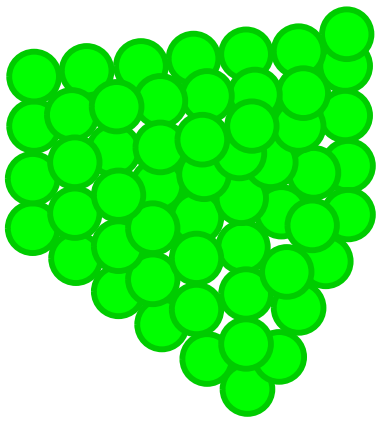




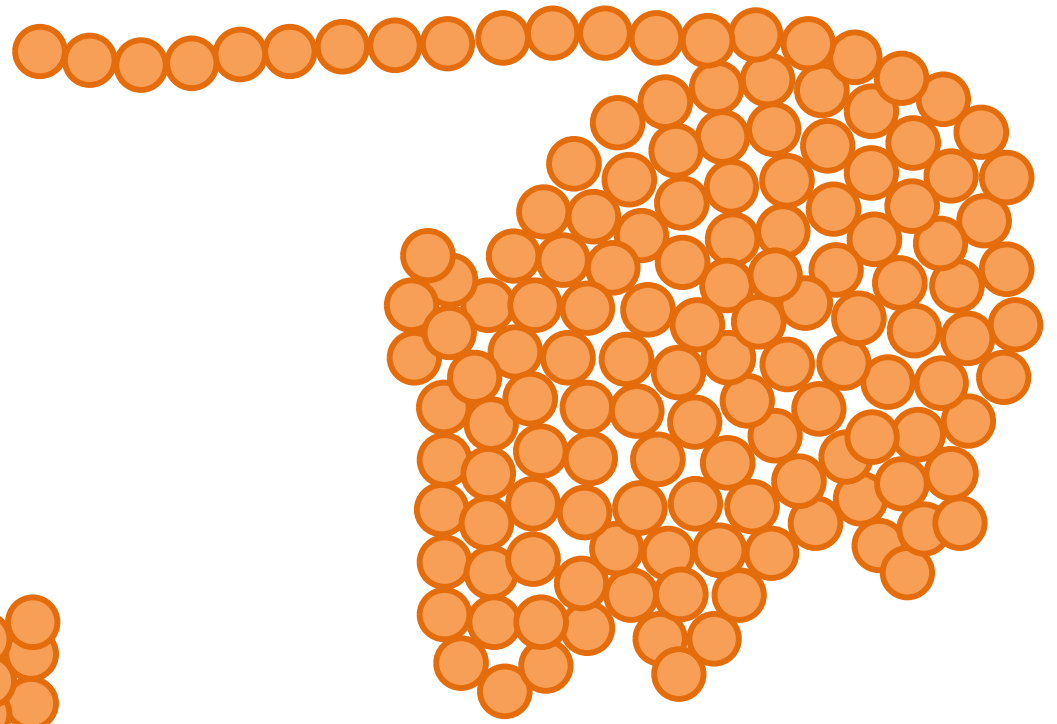
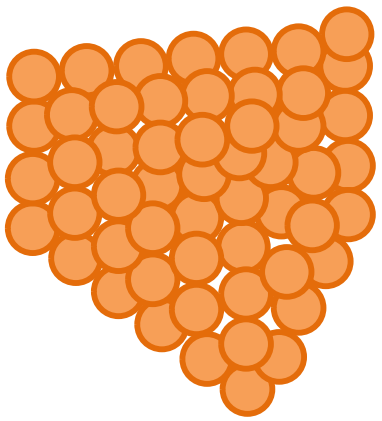


=





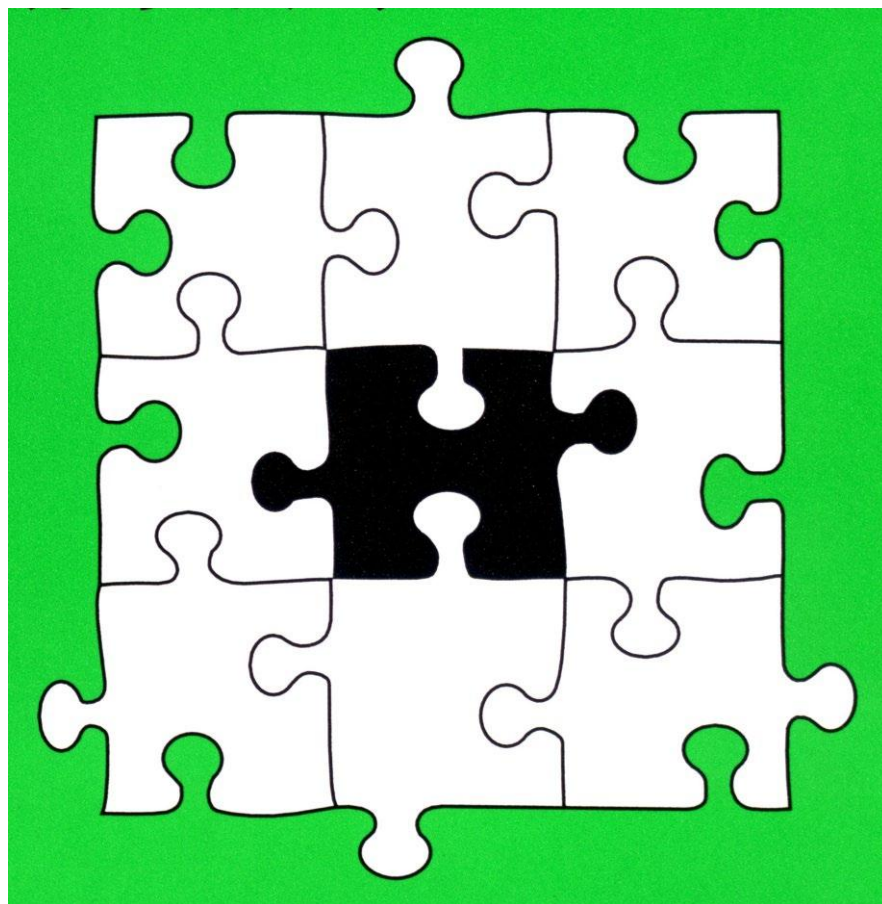




# 動的平衡

どうてきへいこう

Dynamic equilibrium



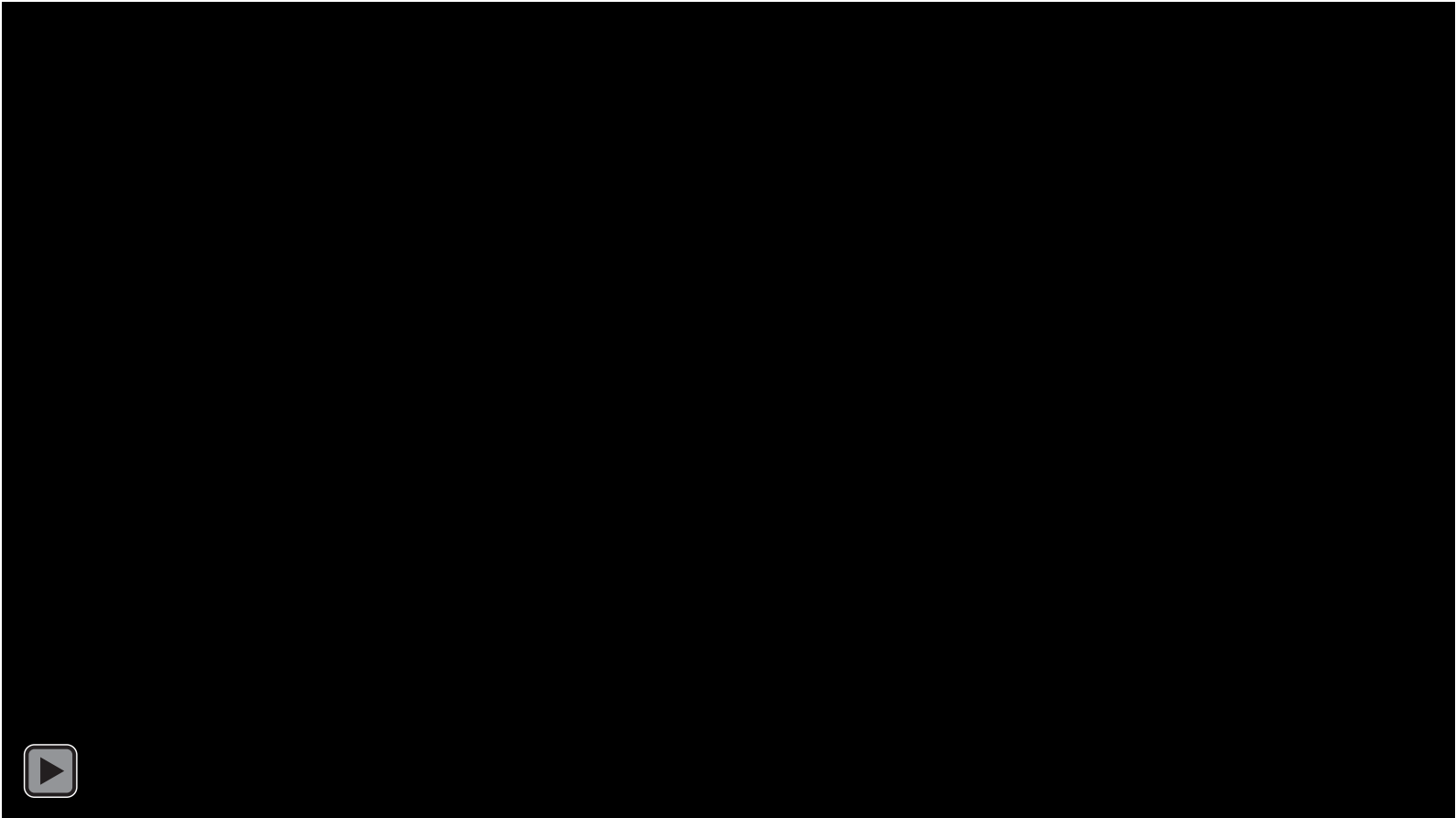
相補性 (mutually complement)=利他性



# 動的平衡とは

作ることよりも、壊すことが優先  
変わらないために変わり続ける  
分解と合成の絶えまない均衡

代替・柔軟・可変・回復・修復







生命には、物質の下る坂を登ろうとする  
努力がある  
アンリ・ベルグソン(1907)

生命は「エントロピーの増大則」に抗している  
シュレディンガー  
(1944)